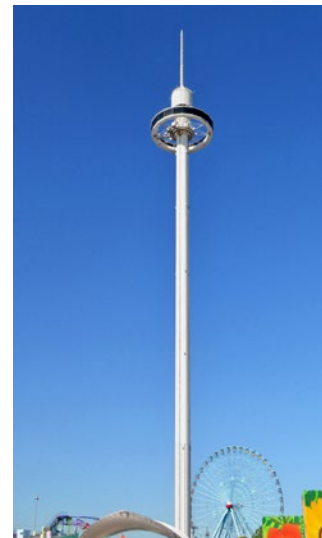


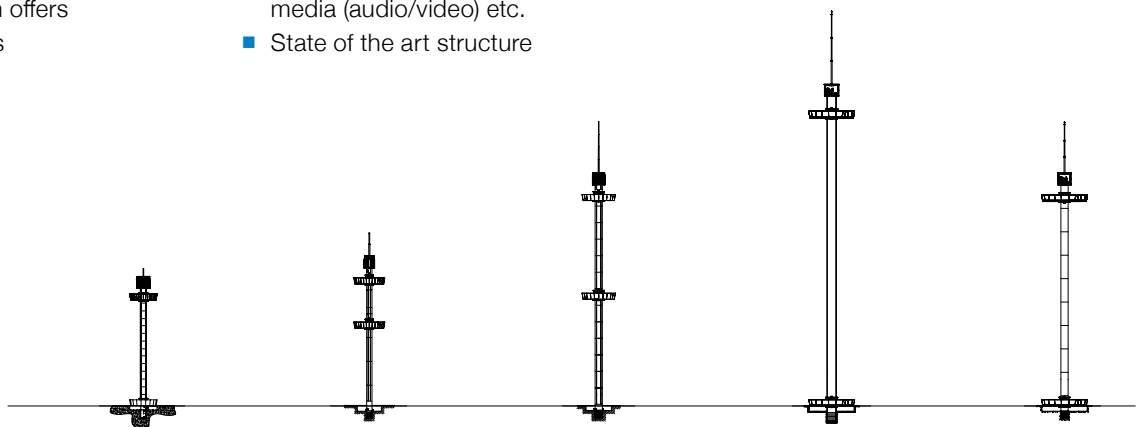
Super Gyro Tower





Super Gyro Tower

- Different heights up to 155 meters available
- Cabin capacity up to 100 passengers
- 2-floors cabin configuration available
- Freedom of movement within the cabin
- Slow 360° rotation offers breathtaking views
- An iconic observation attraction on a small footprint
- Circular or spherical cabin equipped with panoramic windows
- Several cabin options possible including air conditioning, WIFI, media (audio/video) etc.
- State of the art structure



Technical Data

| Super Gyro Towers | 1000 | 1200 | 1200 | 1300 | 1500 |
|--------------------------|---------|----------|----------|---------|---------|
| Total height of tower | 53 m | 67 m | 110m | 153m | 110m |
| Required space, diameter | 9m | 11 m | 16m | 18m | 18m |
| Traveling speed of cabin | 1 m/sec | 1.2m/sec | 1.5m/sec | 2m/sec | 2m/sec |
| Number of turns of cabin | 1 – 3 | 1 – 3 | 1 – 3 | 1 – 3 | 1 – 3 |
| Capacity of cabin | 50 | 60 | 80 | 100 | 100 |
| Hourly capacity | 1000pph | 1200pph | 1200pph | 1300pph | 1500pph |

Sample layout. Other configurations available.

Taller, bigger upon request